



Leofric

**SYSTEM
BUILDING**

Small workshop, office and storage buildings



INFINITELY VARIABLE BUILDING DESIGNS

FROM STANDARD, DRY-ASSEMBLY MODULES

Permanent and attractive small buildings in a fraction of the time taken for bricks-and-mortar building, and often at lower cost. Choose from three heights, five spans and any length in increments of 4' (1.2m). Workshops, offices, site offices, storage and a host of other buildings. Completed in days and expandable as your needs grow.

Exterior finish can be in attractive Sparlight or White Spar applied aggregate, Rockwall, Shiplap or our realistic new Logwall simulated log effect.

Buy from Leofric and you also buy peace-of-mind. Our heritage stems back over 50 years as leading producers of quality system buildings.



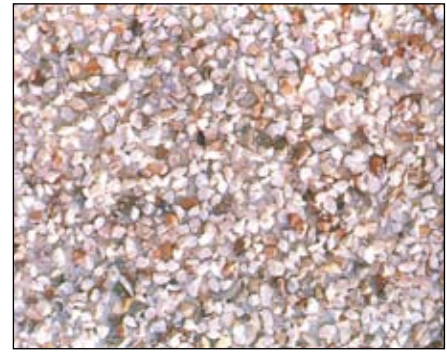
This Leofric building is used as a workshop and stores at a college for disabled people.



Extra-height buildings for vehicle, caravan or boat storage are easy with Leofric. This one is used as garaging for a school minibus.



Logwall finish



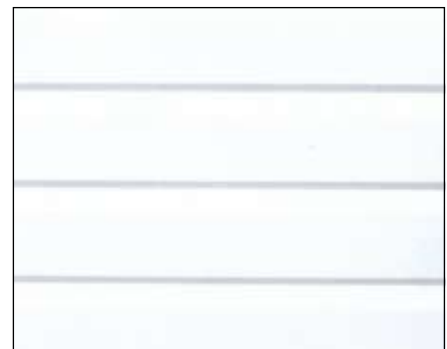
Sparlight finish



Rockwall finish

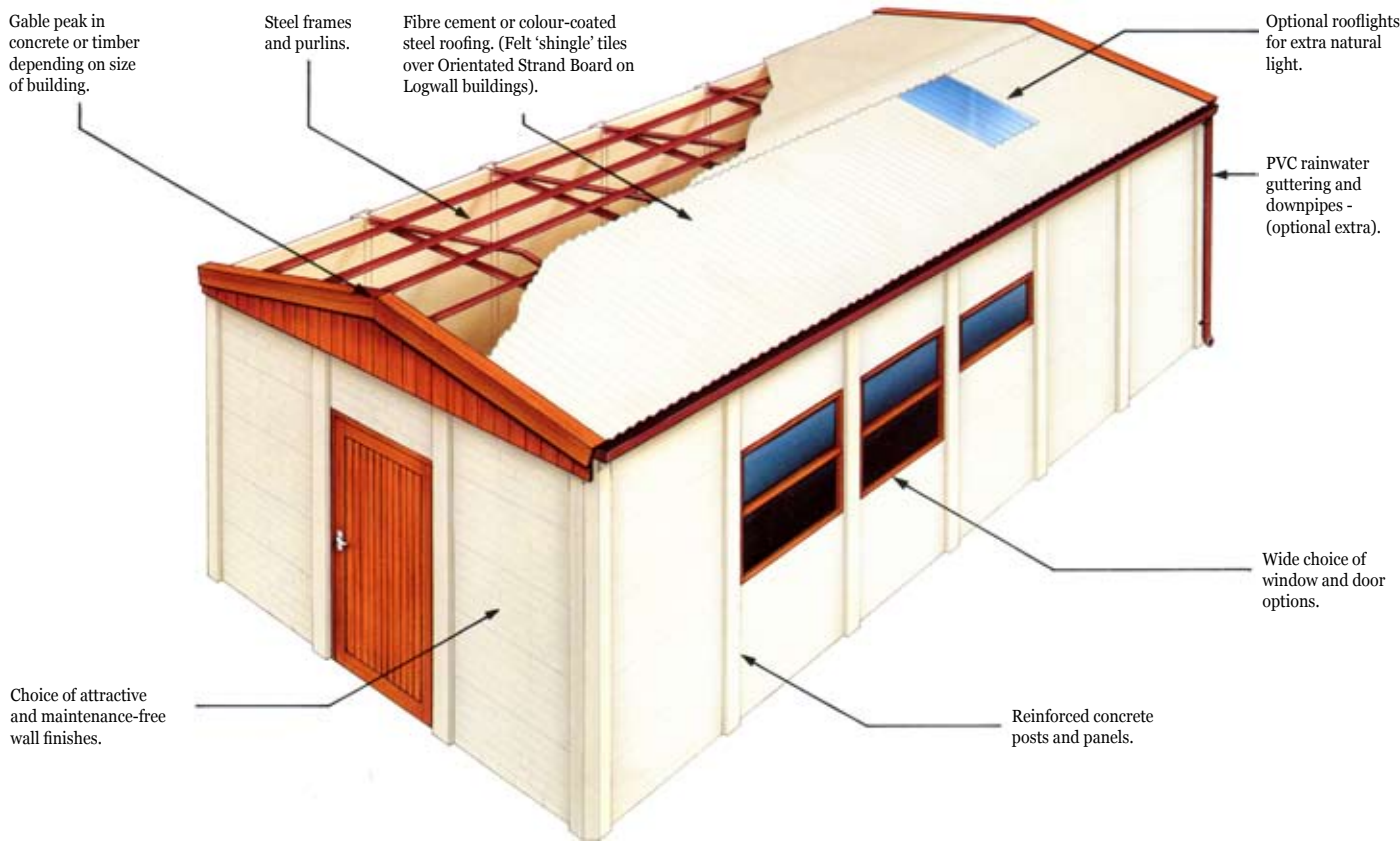


White Spar finish



Shiplap finish

Quality and Value Go Hand-in-Hand



SPECIFICATION

External widths. A choice of 5 widths - 8'7" (2.616m), 10'7" (3.225m), 12'7" (3.842m), 14'11" (4.545m) and 16'8" (5.086m). Logwall versions available only in the 8'7", 12'7" and 16'8" widths.

Eaves height. Available with an eaves height of 6'8" (2.03m), 8'3" (2.51m), or 10'0" (3.0m). Logwall buildings only in 6'8" eaves height.

Length. Any length in increments of 4' (1.2m).

Steelwork. The size and design of roof members and purlins vary according to the width, height, length and configuration of the building. Portal frames are included where required.

Walls. Precast concrete posts and panels dove-tailed together and clamped with galvanised steel plates. Wall panels are sealed together with non-hardening mastic and have rebated edges forming self-draining joints.

Wall linings. Walls can be lined internally with 13mm plasterboard enclosing 80mm glassfibre insulation to give a minimum 'U' value of 0.45 watts/sq m °C. Skirtings, trims and architraves around windows and doors are included.

Roof. Fibre cement or colour-coated steel roof sheeting, carried on steel purlins. To maximise natural light, rooflights can be incorporated. Logwall buildings have an attractive felt 'shingle' tile roof available in a variety of colours and carried on robust Orientated Strand Board.

Rainwater goods. PVC gutters and downpipes are available if required.

Roof lining. The roof can be lined over purlin with 40mm white foil-faced Polyisocyanurate foamboard, giving a minimum 'U' value of 0.45 watts/sq m °C.

Windows & doors. Timber windows and doors

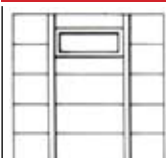
are supplied in a basecoat wood stain which you can either paint or stain to suit your own requirements.

PVCu and aluminium windows and personal doors are also available.

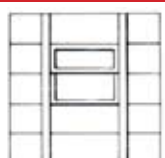
Erection. All Leofric buildings have been designed for easy owner erection, and simple to follow instructions are supplied. Alternatively, we will be pleased to erect the building for you at a very reasonable charge. When roof and/or wall linings are required we recommend that you have the building erected by us.

Base. The base required should be flat, level and square. A base detail drawing is available on request and is always supplied upon receipt of your order.

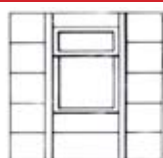
WINDOW & DOOR OPTIONS



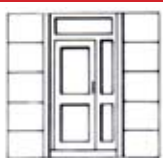
W1
One panel fixed or opening window. Width 4' module (1200mm). Height 1'7"(478mm).



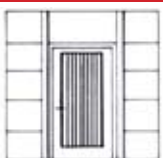
W2
2 panel window with opening top light. Width 4' module (1200mm). Height 3'3"(990mm).



W3
3 panel window with opening top light. Width 4' module (1200mm). Height 4'10"(1475mm).



GSD or FSD
Single timber door with transom light and side panel. Width 4' (1200mm) module. Door height 6'8" (2040mm). Door width 2'8" (826mm). Glazed or flush.



PD
Fully boarded single timber door. Width 4' module (1200mm). Opening width 3'4"(1012mm).



GDD or FDD
Double timber doors with transom lights and side infill panel. Width (double module) - 8'(2400mm). Door height 6'8" (2040mm). Door width 4'10" (1476mm). Glazed or flush.



F8
Timber hinged double doors for side or gable (side door not available on 6'8" (2.20m) eaves height buildings). Width (double module) - 8' (2400mm). Opening width 7'2" (2194mm). Height of side doors is 7'5" (2260mm) for 8'3" (2.5m) eaves height and 9'1" (2770mm) for 10'(3m) eaves height. Gable door heights for the 3 eaves heights are 6'2"(1880mm), 8'1"(2470mm) and 9'9"(2975mm) respectively.



S8
Timber sliding door available in sides of 8'3"(2.5m) and 10'0" (3.0m) eaves height buildings only. Width 7'6"(2276mm). Height 7'5"(2270mm) for 8'3"(2.5m) eaves height and 9'1"(2770mm) for 10'0"(3.0m) eaves height.



Amenities block for an allotment association in Slough, providing toilet facilities, storage and a shop.



From retail use to workshops and small buildings, Leofric is the natural choice



Leofric buildings are ideal for a while host of storage applications.



Our 'log cabin' style concrete buildings blend well with natural surroundings and so are ideal for a wide variety of applications. They have proven a popular choice with municipal and local authorities as utility, workshop and storage buildings that blend with the environment and, as home offices or workshops, they harmonise superbly with any garden setting. The shingle-style roof tiles are available in a variety of colours and the walls can be painted using proprietary masonry paint, or treated with wood stains, as in the building shown here.



Leofric

Leofric Building Systems Ltd

Hillside House, Stratford Road, Mickleton, Nr. Chipping Campden, Glos GL55 6SR

Tel: 01386 430 121 | Fax: 01386 438 135

Email: sales@leofricbuildings.co.uk | Website: www.leofricbuildings.co.uk

30 YEARS' EXPERIENCE IN PROVIDING FAST & EFFECTIVE ANSWERS